



# MetroWest<sup>+</sup>

## Portishead Branch Line (MetroWest Phase 1)

TR040011

**Applicant: North Somerset District Council**

**6.25, Environmental Statement, Volume 4, Technical Appendices, Appendix 16.1:**

**Transport Assessment (Part 2 of 18) – FIGURES vol 1**

**The Infrastructure Planning (Applications: Prescribed Forms and Procedure)**

**Regulations 2009, Regulation 5(2)(a)**

**Planning Act 2008**

**Author: CH2M**

**Date: March 2021**



**This report was originally submitted in November 2019. This version of the report contains the following updates:**

- Figure 3.1, Figure 3.2 and Figure 3.3 updated to contain the revised “Portishead Station Car Park Layout, Landscaping and New Boulevard and Access Plans (Sheets 1, 2 and 3)**
- Figure 3.11 – updated to present a scheme drawing for the Ashton Vale Road area, rather than a schematic image**

**The latest Trinity Footbridge plans are contained within documents 2.15-2.17.**

LIST OF FIGURES – in Part 2 of Appendix 16.1

- Figure 3 1: Indicative Portishead station preferred option – Drawing 1
- Figure 3 2: Indicative Portishead station preferred option - Drawing 2
- Figure 3 3: Indicative Portishead station preferred option - Drawing 3
- Figure 3 4: Indicative Pill station preferred option - Drawing 1
- Figure 3 5: Indicative Pill station preferred option - Drawing 2
- Figure 3 6: Indicative Pill station preferred option- Drawing 3
- Figure 3 7: Indicative proposed parking restrictions in Portishead
- Figure 3 8: Indicative proposed parking restrictions in Pill
- Figure 3 9: Trinity Pedestrian Footbridge General Arrangement (sheet 1)
- Figure 3 10: Trinity Pedestrian Footbridge General Arrangement (sheet 2)
- Figure 3 11: Proposed pedestrian/cycle footbridge at Ashton Vale
- Figure 3 12: Barons Close Pedestrian Crossing Point (currently closed)
- Figure 3 13: Proposed Portishead and Sheepway Maintenance and Emergency  
Accesses
- Figure 3 14: Proposed Pill and Avon Gorge Maintenance and Emergency Accesses
- Figure 3 15: Proposed Ashton Vale Maintenance and Emergency Accesses





SECTION 3

# Scheme Proposals







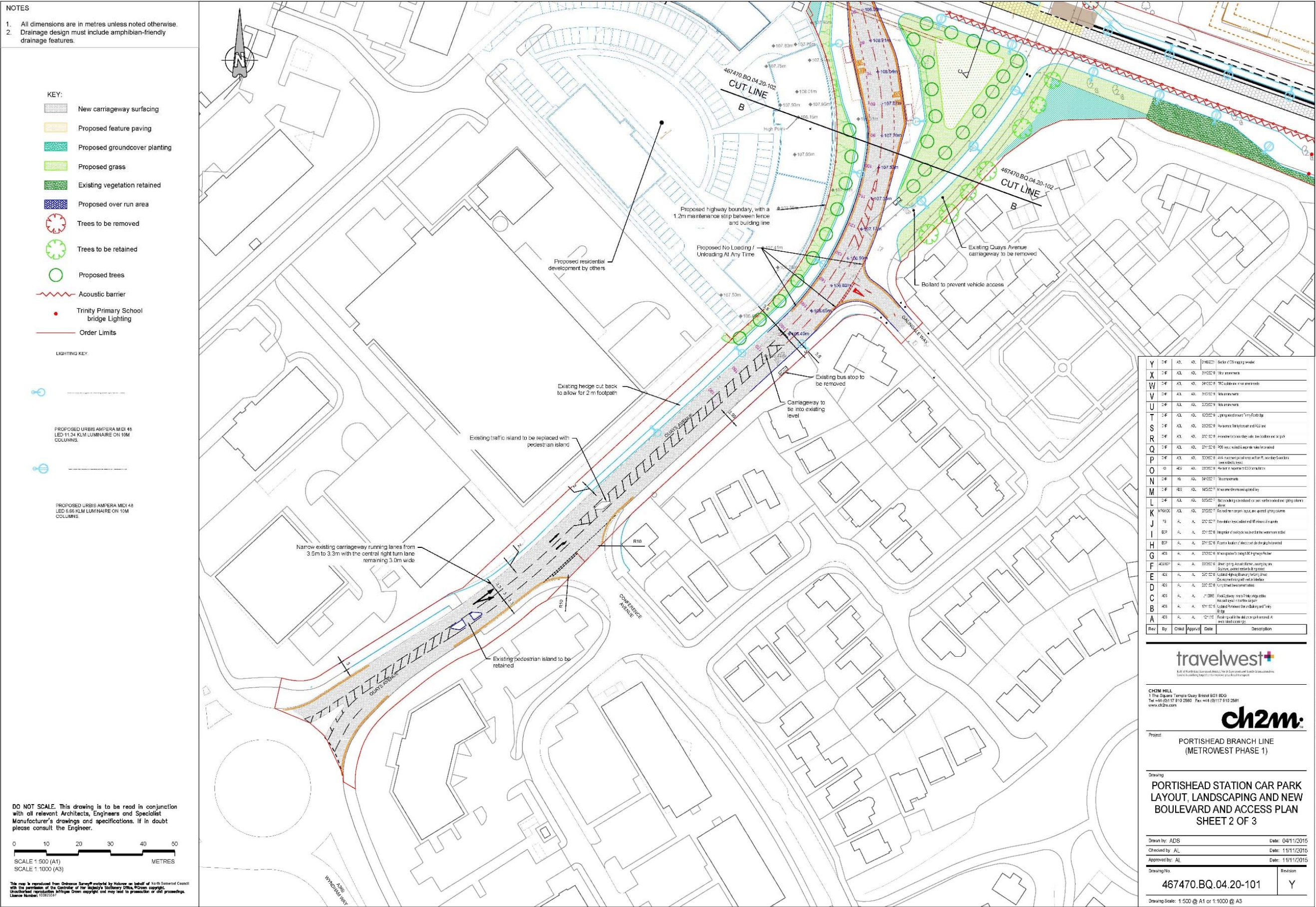


Figure 3-2: Indicative Portishead station preferred option - Drawing 2







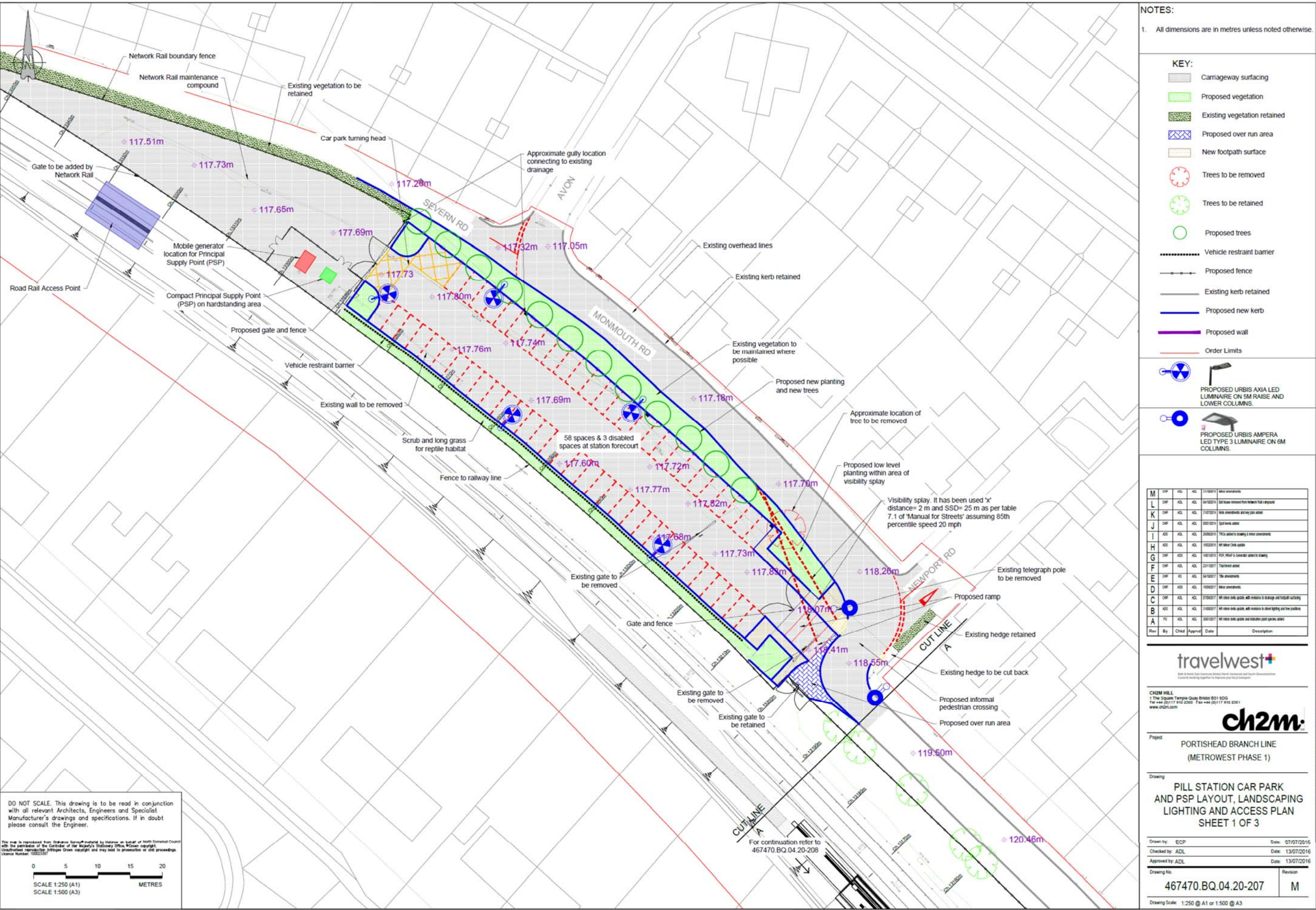


Figure 3-4: Indicative Pill station preferred option - Drawing 1



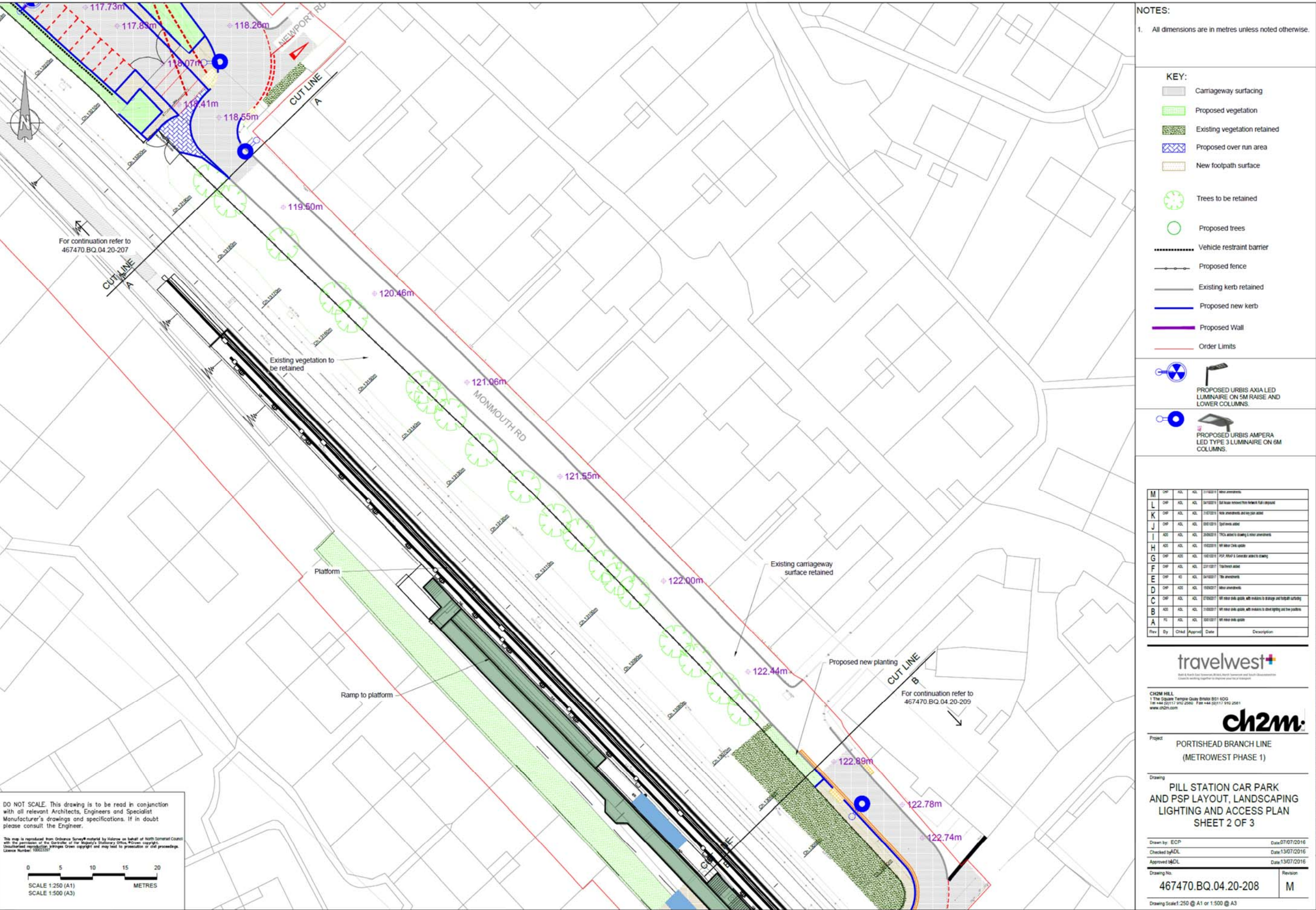


Figure 3-5: Indicative Pill station preferred option - Drawing 2











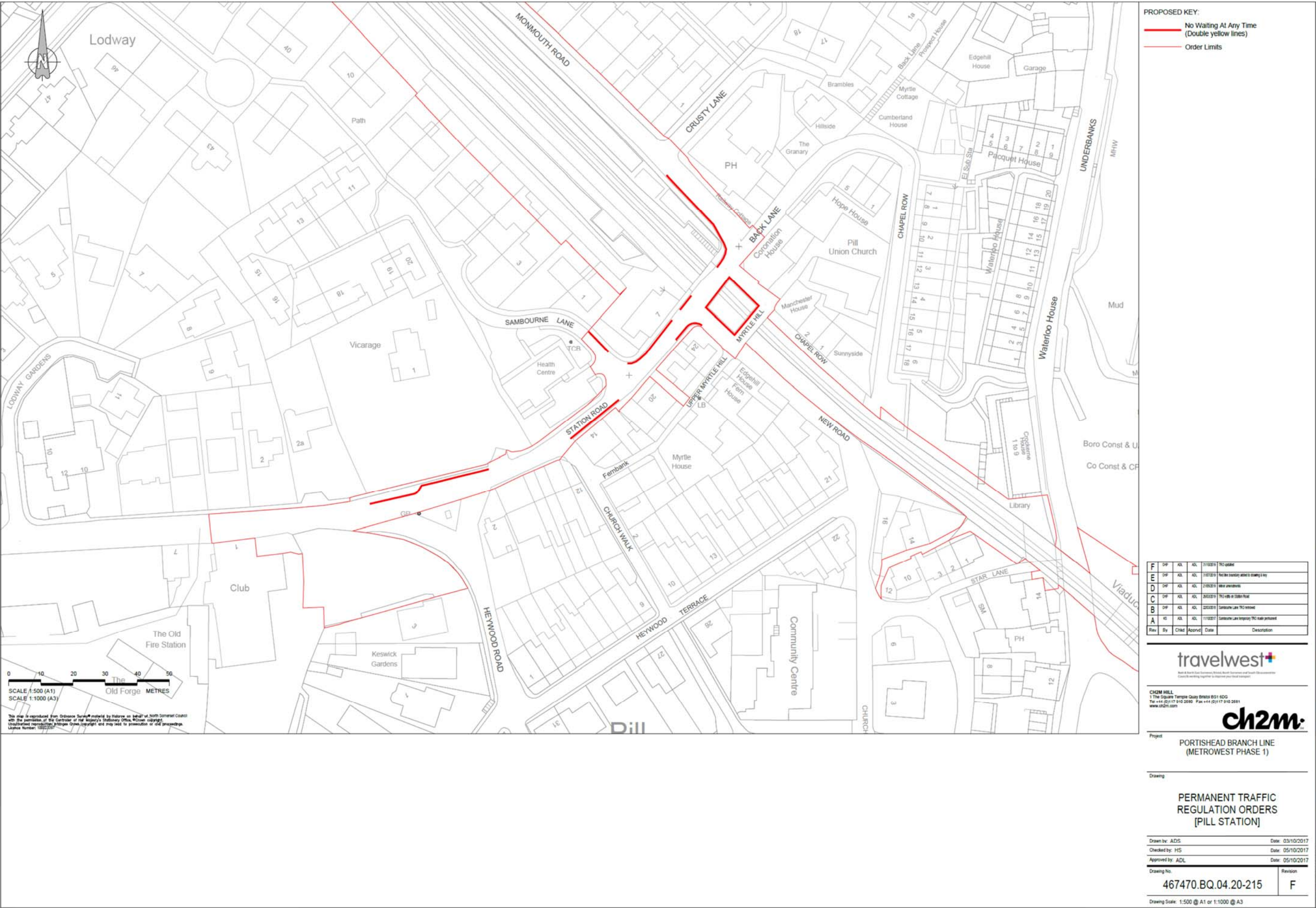


Figure 3-8: Indicative proposed parking restrictions in Pill







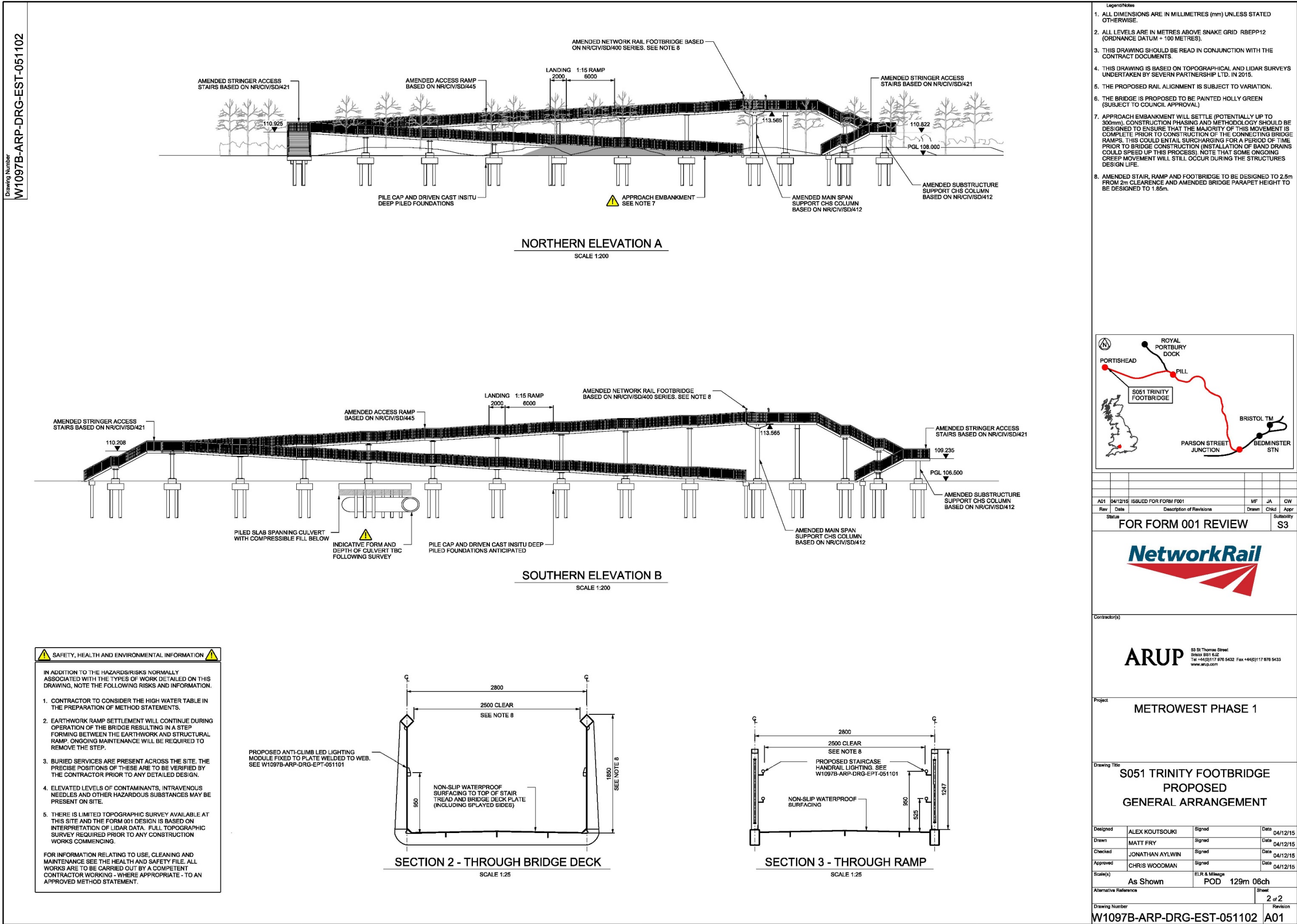


Figure 3-10: Trinity Pedestrian Footbridge General Arrangement (sheet 2)

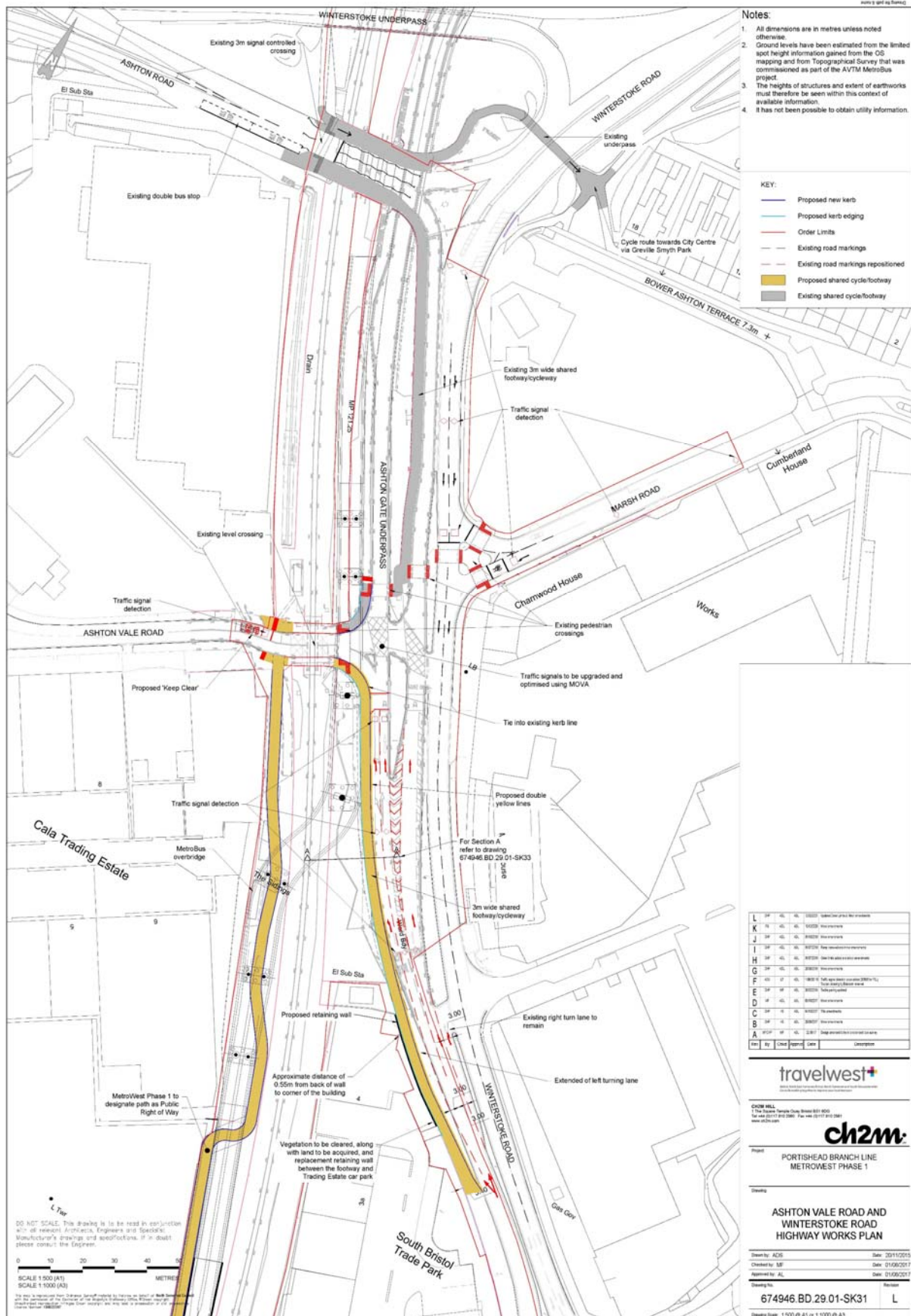


Figure 3-11: Scheme changes in Ashton Vale Road area





Figure 3-12: Barons Close Pedestrian Crossing Point (currently closed)

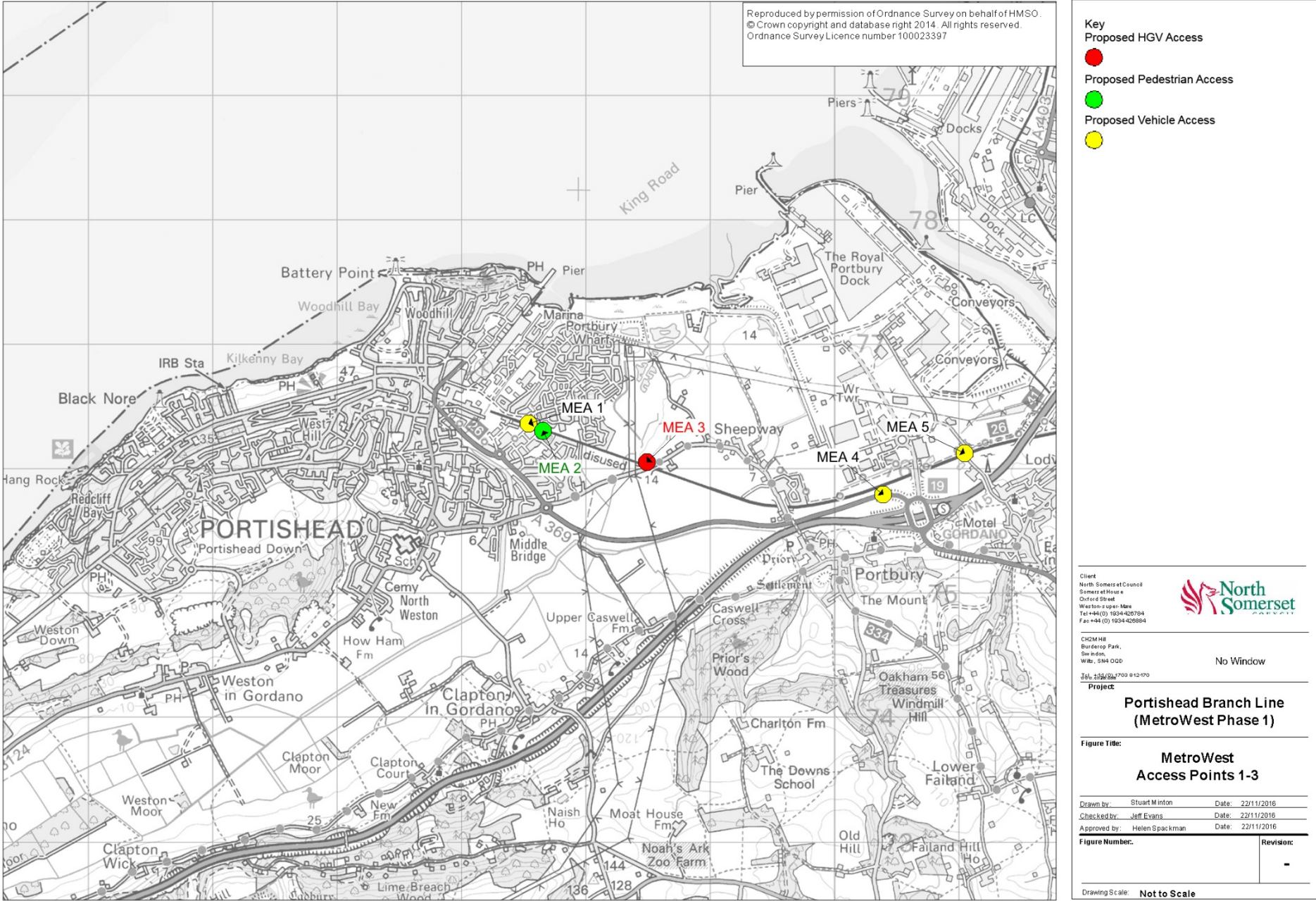


Figure 3-13: Proposed Portishead and Sheepway Maintenance and Emergency Accesses



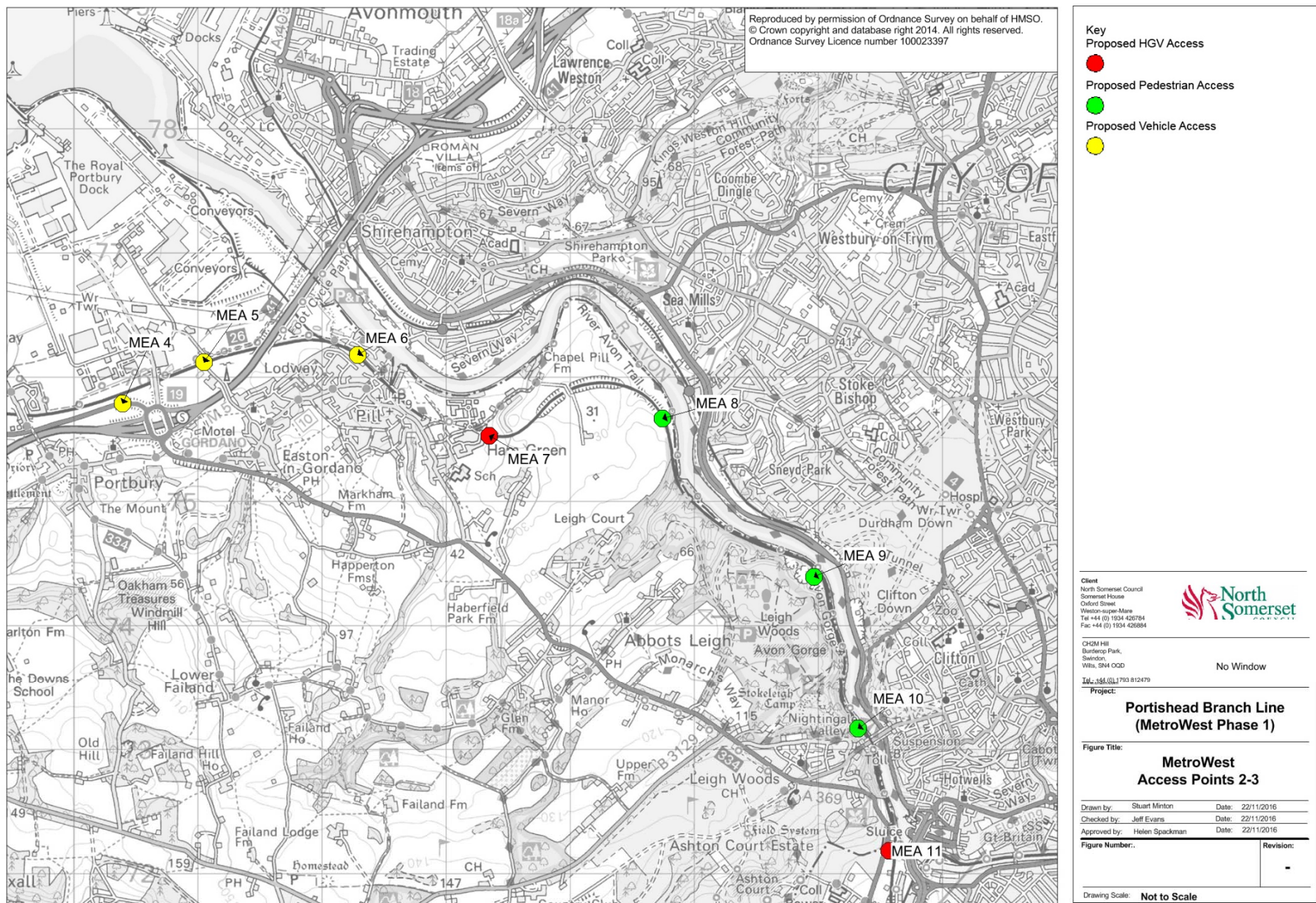


Figure 3-14: Proposed Pill and Avon Gorge Maintenance and Emergency Accesses



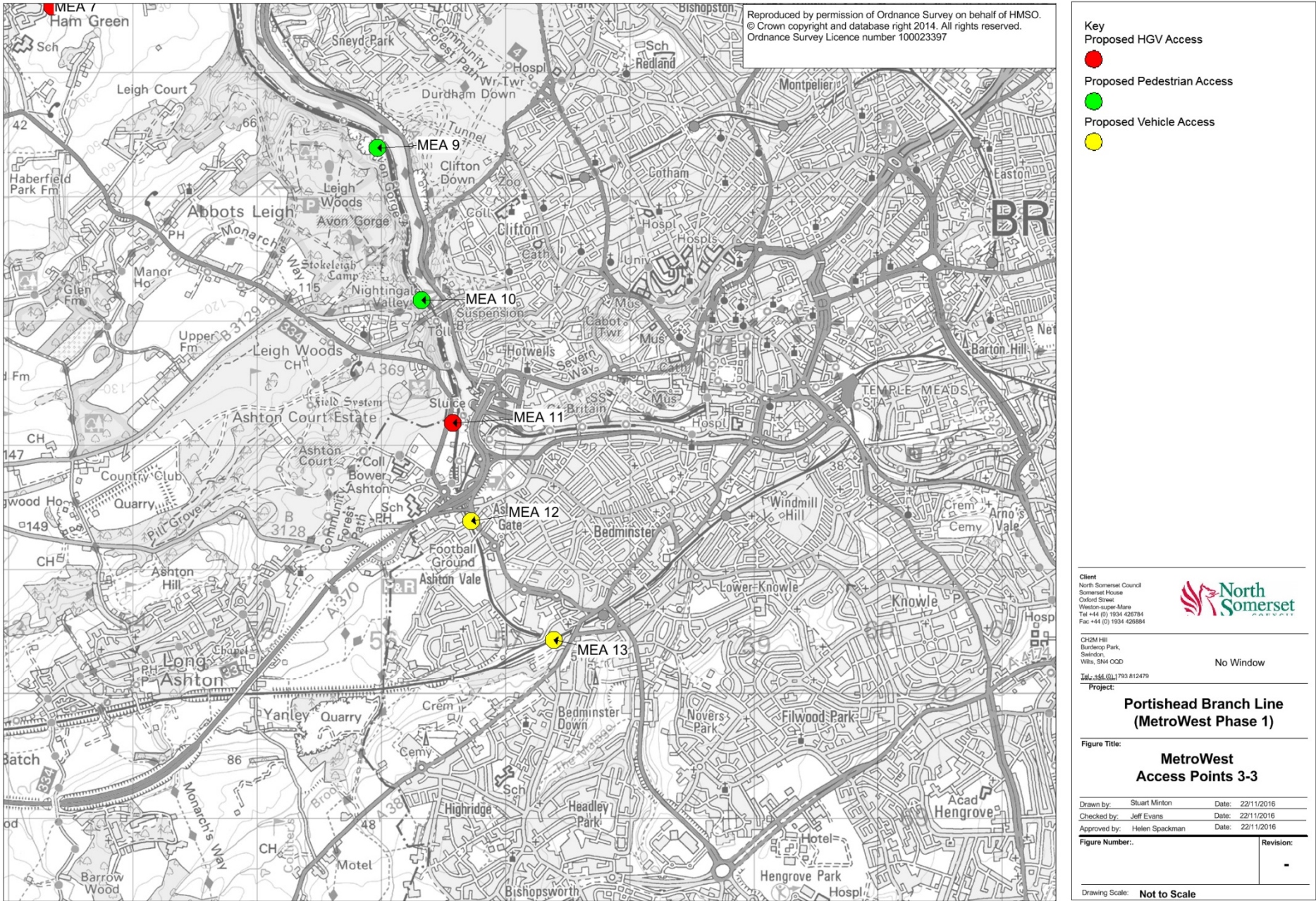


Figure 3-15: Proposed Ashton Vale Maintenance and Emergency Accesses